



## CERTIFICATE OF ANALYSIS

20 Martin Ross Avenue, North York, ON, M3J 2K8, CANADA  
Tel: (416) 665-9696, Fax: (416) 665-4439  
Email: orders.trc@lgcgroup.com Website: www.trc-canada.com

### 1. Identification

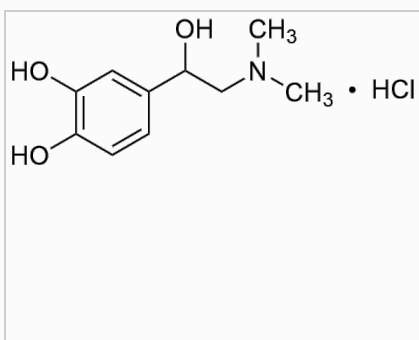
**Catalogue Number:** M304300

**CAS Number:** 62-22-6

**Product:** rac N-Methyl Epinephrine Hydrochloride Salt

**Synonym:** 3,4-Dihydroxy- $\alpha$ -(dimethylaminomethyl)benzyl Alcohol Hydrochloride Salt; DL-1-(3,4-Dihydroxyphenyl)-2-dimethylaminoethanol Hydrochloride Salt; Methadren Hydrochloride Salt; N-Methyladrenaline Hydrochloride Salt; N-Methylepinephrine Hydrochloride Salt; NSC 169812; dl-N-Methylepinephrine Hydrochloride Salt;  $\alpha$ -(3,4-Dihydroxyphenyl)- $\alpha$ -hydroxy- $\beta$ -dimethylaminoethanol Hydrochloride Salt;  $\alpha$ -(3,4-Dihydroxyphenyl)- $\beta$ -dimethylaminoethanol Hydrochloride Salt;  $\alpha$ -(Dimethylaminomethyl)protocatechuyl Alcohol Hydro

**Structure:**



**Molecular Formula:**

$C_{10}H_{15}NO_3 \cdot HCl$

**Molecular weight:**

233.69

**Source of Product:**

Synthetic

**Solubility:**

No Data Available

**Lot Number:** 6-JAY-177-2

**Purity:** 98%

**Shipping Condition:** This Product Is Stable To Be Shipped At Room Temperature

**Storage Condition:** 4°C

### 2. Warning

**Warning 1:**

**Warning 2:**

**Warning 3:**

### 3. Analytical Information

Tests:	Specifications:	Results:
Specific Rotation	Report Result	0.0° (c = 0.2, DMSO)
Appearance	Pale Grey to Light Grey Solid	Pale Grey to Light Grey Solid
Chloride Content	Report Result	14.9%
NMR	Conforms to Structure	Conforms
Elemental Analysis	Conforms	%C: 50.10, %H: 7.28, %N: 5.76
MS	Conforms to Structure	Conforms
HPLC Purity	Report Result	99.54% (205 nm)

**Additional Information:** Contains: ~3.5% Methanol

Purity is based on the analytical results of the tests performed. NMR and Elemental Analysis (if available) may have an accuracy of  $\pm 2\%$ . Isotopic purity is based on mass distribution observed. The contents of the specifications are subject to change without advance notice, and the specification values displayed here are the most up to date values.

### 4. Signatures

Reviewed By	Reviewed By	C of A Approved By	Test Date	Retest Date
Swathi Reddy	Toni Rantanen	Chanell Chu	3/16/2022	3/14/2026
				